



DiSSCO

Be.DiSSCo-FED

____ Be.DiSSCo-FED Final Event
10/06/26 - RBINS

**Synergies Global Biodiversity
Information Facility & DiSSCo**

Patricia Mergen

RMCA, Meise Botanic Garden, Belspo

GBIF | Global Biodiversity Information Facility

Free and open access to biodiversity data

OCCURRENCES SPECIES DATASETS PUBLISHERS RESOURCES

What is GBIF? About GBIF Belgium

Rönchlid's atlas moth (*Rothschildia jacobaeae*) observed in Canelones, Uruguay by Guillermo Menéndez (CC-BY-NC 4.0)



3,737,145,525

Occurrence records



122,577

Datasets



2,720

Publishing institutions



14,911

Peer-reviewed papers
using data

<https://www.gbif.org/>

Observations and Specimens from Collections

Worldwide scope



Global
Registry of
Scientific
Collections

A worldwide catalogue of scientific collections

Institution name

Digitized specimens ⁰⁰

▶ Getting started?



9,696
Institutions



10,902
Collections



271,125,832
Digitized specimens

Technical services : GBIF hosted portal

Featured hosted portals in production



VertNet



GBIF France



European Journal of
Taxonomy



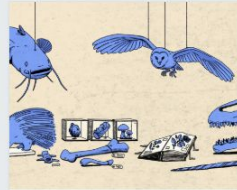
Portal datos de
biodiversidad de Argentina



Biodiversidad.co



GBIF.us



Swiss Natural History
Collections



Pacific Biodiversity
Information Facility

Supporting services and tools

Tools	Community	About
PUBLISHING	DATA ACCESS AND USE	GBIF LABS
IPT	Hosted portals	Species matching
Data validator	Scientific collections	Name parser
GeoPick ↻	Data processing	Sequence ID
New data model	Derived datasets	Relative observation trends
GRSciColl ↻	rgbif	GBIF data blog ↻
Suggest a dataset	pygbif	
Metabarcoding data toolkit ↻	SQL downloads	
	Tools catalogue	

- taxonomic backbone (Catalogue of Life, Checklist bank)
- data cleaning and standardisation
- data usage (niche modelling, IUCN red lists, data cubes (invasive species))

Common Data Standards supported



Darwin Core and ABCD (EFG) → specimen level data

Latimer Core → collections descriptors

MIDS → Minimum Information about a Digital Specimen

Supported both by GBIF and DiSSCo

<https://www.tdwg.org/>

Community and networking

NETWORK	VOLUNTEERS	ACTIVITIES
Participant network	Mentors	Capacity development
Nodes	Ambassadors	Programmes & projects
Publishers	Translators	Training and learning resources
Network contacts	Citizen scientists	Data Use Club
Community forum ↔		Living Atlases ↔
alliance for biodiversity knowledge ↔		

Thematic communities and fora

- Traditional knowledge and CARE principles
- Crop wild relatives (Agriculture and food)
- Invasive species
- Climate Change
- Health

<https://www.gbif.org/composition/2SEGqoMS8eMVos9T1owEEk/thematic-communities>

GBIF Awards

<https://www.gbif.org/awards>

GBIF Awards



Graduate Researchers Award

2026 Global deadline: 29 May



Ebbe Nielsen Challenge

Deadline: 26 June 2026



GBIF Node Awards

Deadline: 15 August 2025 (closed)

PROGRAMME

BID: Biodiversity Information for Development

Enhancing individual and institutional capacity at regional scale to mobilize and use FAIR and open data on biodiversity in research and policy to the benefit of science and society



<https://www.gbif.org/programme/82243/bid-biodiversity-information-for-development>

Call for proposals for 2026 Capacity Enhancement Support Programme

CESP aims to strengthen the GBIF network through collaborative projects by involving Participant nodes

DEADLINE: 19 January 2026



Illustration of *Asplenium flaccidum* G.Forst. from Ferns: British and exotic... (Vol. 5). Groombridge and Sons. Lowe, E. J. (1856) available under public domain via the Biodiversity Heritage Library

GBIF invites all current [GBIF participants](#) to submit concept notes for project funding through the [Capacity Enhancement Support Programme \(CESP\)](#), which enables collaboration between GBIF participants to address identified needs at regional and global levels.

<https://www.gbif.org/programme/82219/capacity-enhancement-support-programme>

Belgian Gbif Node at biodiversity.be



ABOUT ▾

TOPICAL ISSUES ▾

OUR SERVICES ▾

RESOURCES ▾

EVENTS

NEWS ▾

CONTACT

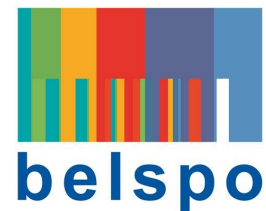


Node manager:

Maxime

Coupremanne:

m.coupremanne@biodiversity.be

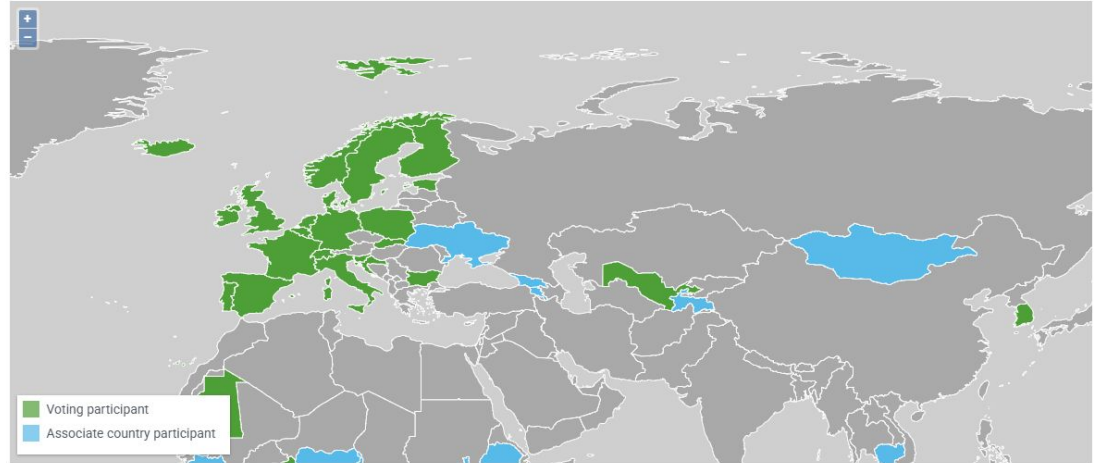


GBIF EU level

<https://www.gbif.org/the-gbif-network/europe>

The GBIF Network

GLOBAL AFRICA ASIA **EUROPE AND CENTRAL ASIA** LATIN AMERICA AND THE CARIBBEAN NORTH AMERICA OCEANIA PARTICIPANT ORGANIZATIONS GBIF AFFILIATES



Role ▾	Name	Participant
Regional representative for Europe and Central Asia	Endresen, Dag	Norway
Deputy regional representative for Europe and Central Asia	Johansson, Veronika A.	Sweden



Patricia Mergen

RMCA

THANK YOU

DiSSCO

Be.DiSSCo-FED

____ Be.DiSSCo-FED Final Event
10/06/26 - RBINS